



NATIONAL INSTRUMENTS

**LabVIEW**



# Installing LabVIEW

How-To Install the LabVIEW Software

Hans-Petter Halvorsen, M.Sc.

# LabVIEW Training

Basic LabVIEW Programming and creating DAQ Applications

<http://home.hit.no/~hansha/?training=labview>



# LabVIEW Training

© Hans-Petter Halvorsen

Here will we learn basic LabVIEW programming. LabVIEW is a graphical programming language created by National Instruments ([www.ni.com](http://www.ni.com)).

**This is self-paced LabVIEW training where you can watch short Videos and do Practical Exercises in your own pace.**

Table of Contents:

1. Installation of LabVIEW
2. LabVIEW Videos
3. Basic LabVIEW Exercises
4. LabVIEW DAQ Exercises
  - 4.1 Basic DAQ in LabVIEW (TC-01)
  - 4.2 Using I/O with LabVIEW (USB-6008)
5. LabVIEW Test and Diploma

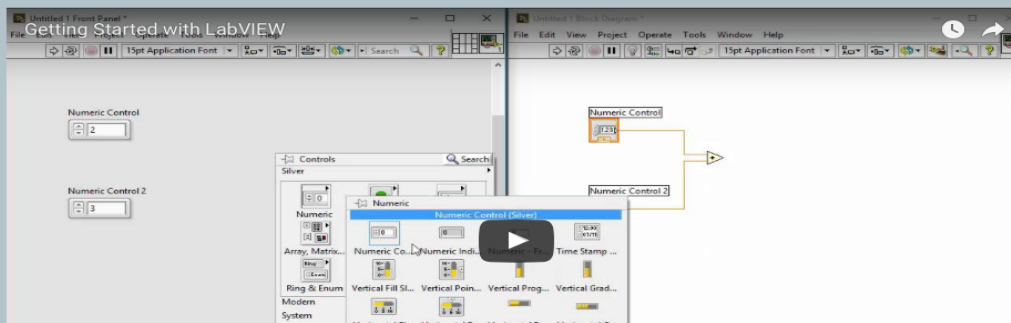
Additional Resources

Questions and Discussion Forum

## Getting Started

LabVIEW Is a graphical programming language used by scientists and engineers. LabVIEW is well suited for DAQ Applications and Control and Simulation Applications.

Watch the Video below to get a short overview of LabVIEW:



- Lab Work
- Courses
- Projects
- Tutorials

---

- Programming
- LabVIEW
- MATLAB
- Microsoft .NET
- Databases
- Smartphones
- Mac

---

- Smart House
- DAQ
- Control Systems
- Software



# LabVIEW Installation

## Main Modules:

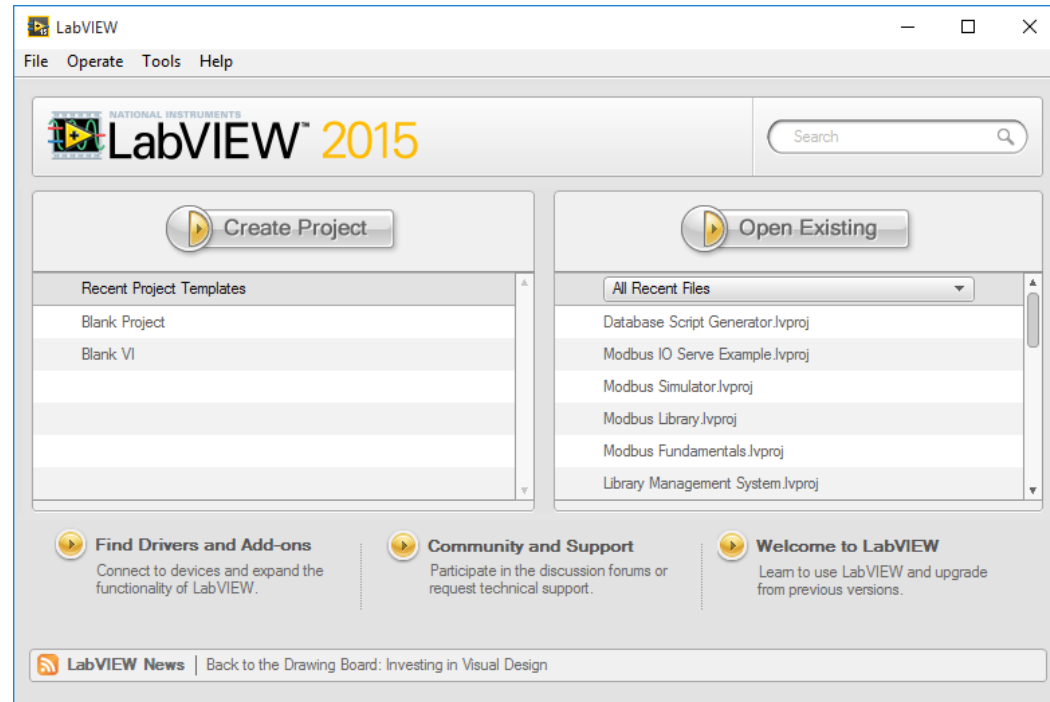
A Valid Serial Number is needed  
- or you can use it for free in 30 days

- LabVIEW
- NI-DAQmx Driver
- LabVIEW Control Design and Simulation Module
- LabVIEW MathScript Module

(Many other Modules and Toolkits exists)

# LabVIEW

- The Core LabVIEW Programming Environment

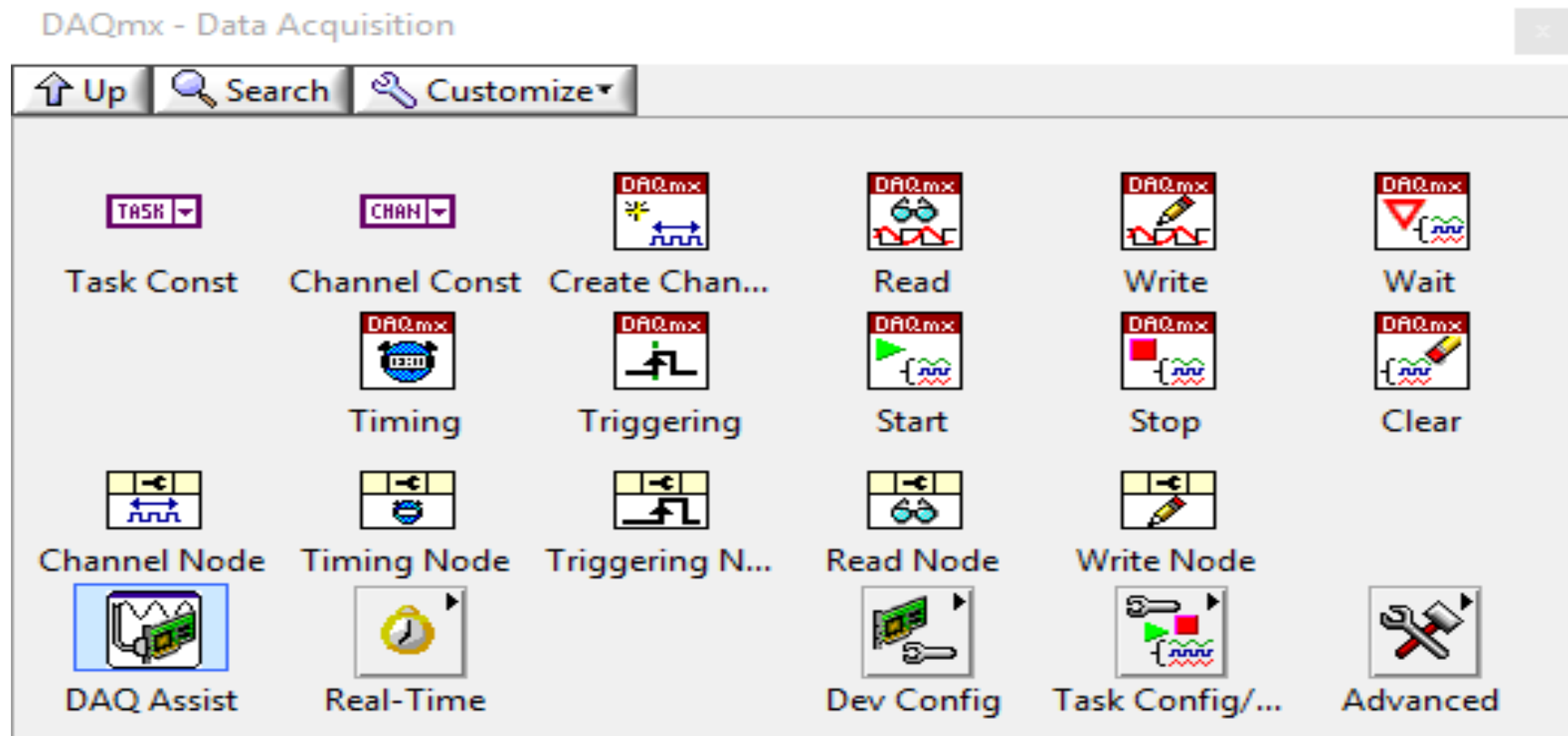


# NI-DAQmx Driver

- Used to communicate with Hardware from National Instruments, such as DAQ devices
- Examples:
  - TC-01 Thermocouple DAQ Device
  - USB-6008 DAQ Device

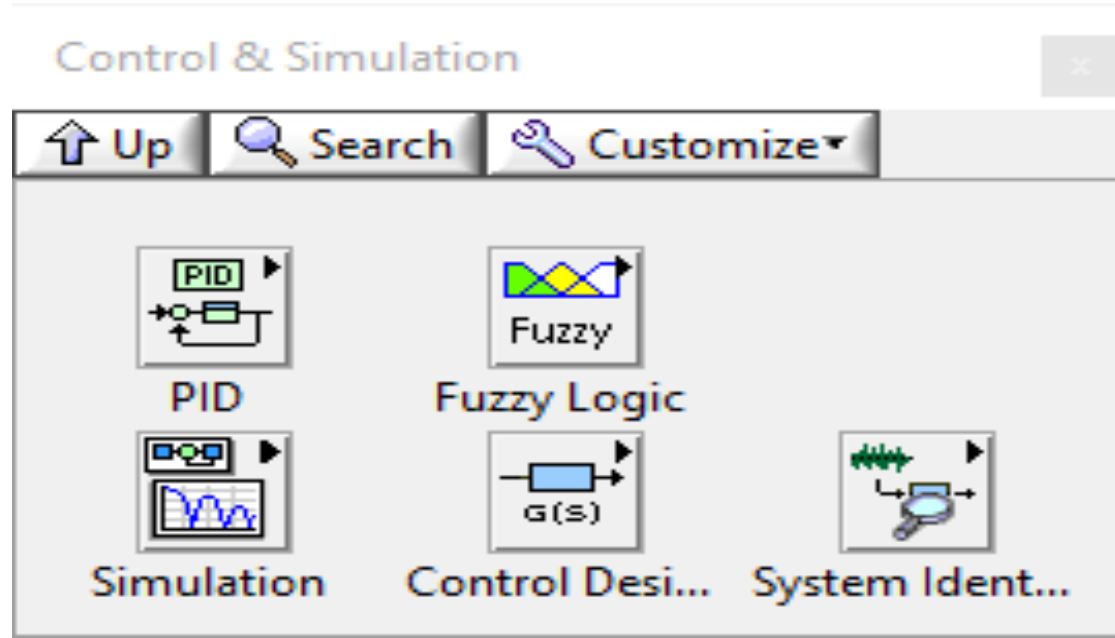


# DAQmx Palette in LabVIEW



# LabVIEW Control Design and Simulation Module

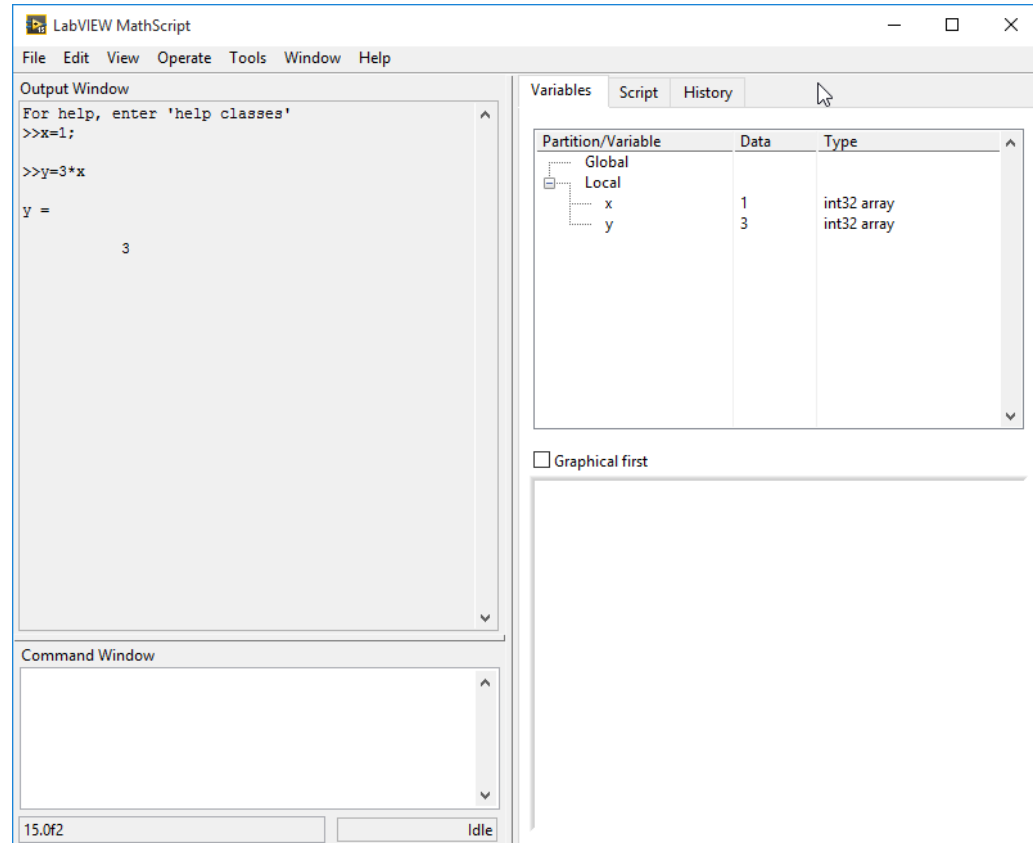
- Used to Create Control and Simulation Applications
- PID Control, etc.





# LabVIEW MathScript Module

- A text-based Programming Add-on to LabVIEW
- Similar syntax as MATLAB
- Typically used for Control Design and Simulations





**DEMO**

Lets see how we can Download and Install LabVIEW and Additional Modules

# LabVIEW Installation

Do you need more LabVIEW Modules?

Here you find all available LabVIEW Modules and Toolkits:

<http://www.ni.com/downloads>

**DEMO**

Hans-Petter Halvorsen, M.Sc.



University College of Southeast Norway

[www.usn.no](http://www.usn.no)

E-mail: [hans.p.halvorsen@hit.no](mailto:hans.p.halvorsen@hit.no)

Blog: <http://home.hit.no/~hansha/>

